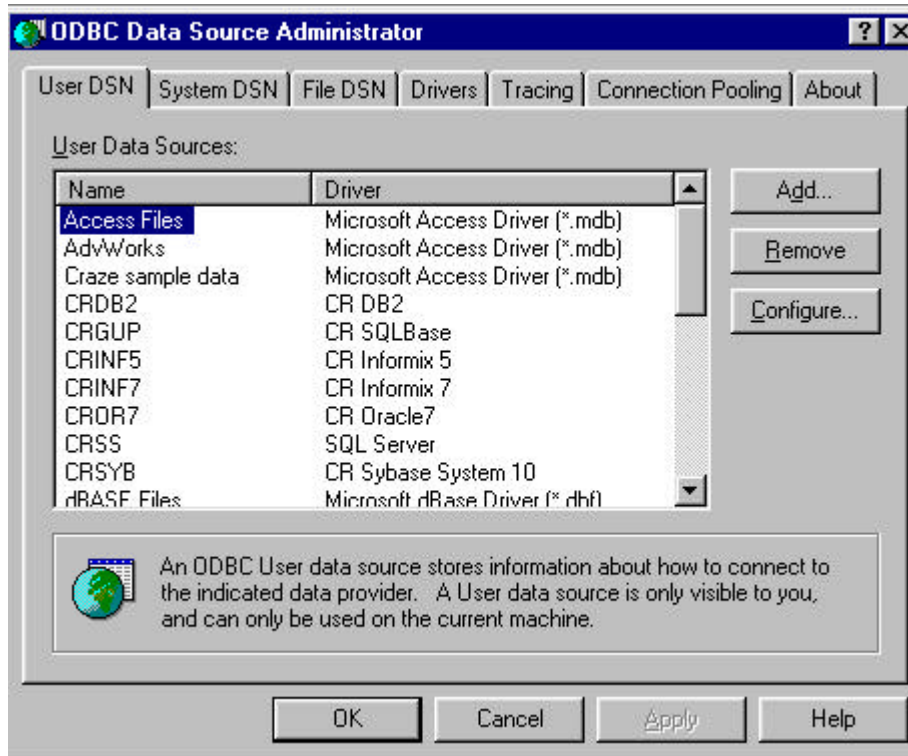


How to make SPSS/SAS read data directly from MS Access via ODBC

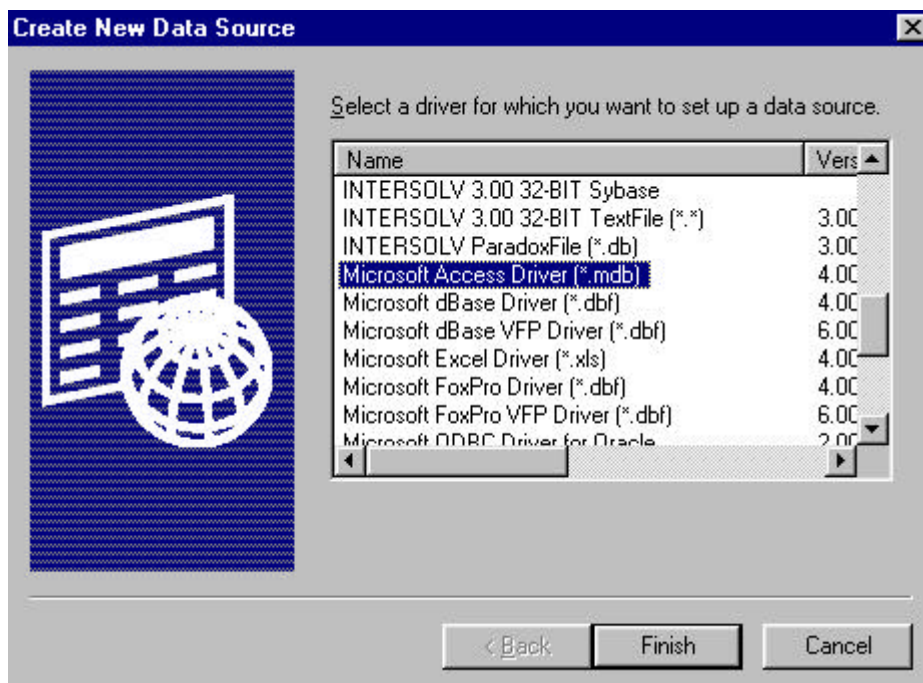
Assuming your Access database is located in c:\my documents\access\sdf and assuming you want to set it up for you (the user) only and you are using Windows 98.

Defining a User DSN (Data Source Name):

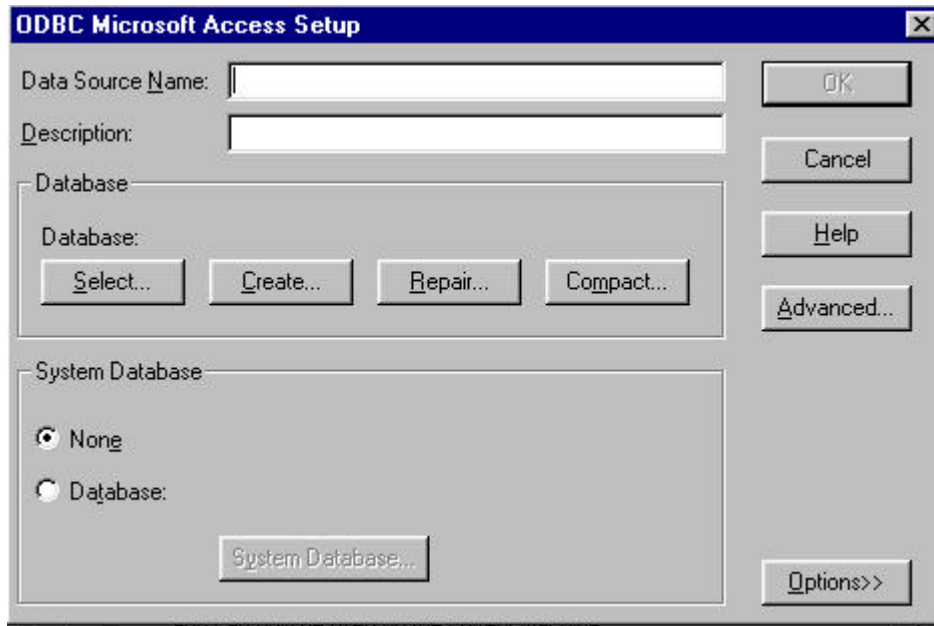
1. Open the Windows Start menu, point on Settings, and select Control Panel.
2. In the Control Panel, double-click ODBC DATA Data Sources (32bit). Select the User DSN tab in the ODBC Data Source Administrator dialog box, as shown below.



3. In the User DSN, if you don't have an entry for Access file, click Add. The Create New Data Source dialog box is displayed.



4. Select the MicroSoft Access Driver and click Finish. The ODBC Microsoft Access setup dialog box is displayed.



5. In the Data Source Name, type in whatever name you would like to name it. For example: AccessSDF. In the Description, you may enter more detailed English-like descriptions of the DSN, such as Access Student Database.
6. Click Select, locate your database in the Select Database dialog box (the path should be c:\my documents\access\sdf\xxx.mdb) and click OK.
7. Click OK all the way to exit ODBC Datasource Management. Reboot your computer, just in case.